



Comprehensive Plan Update Mason County

Kickoff Meeting | February 2024

Agenda

1. Introduction to Project Team
2. Introduction to Comprehensive Planning in Washington
3. Project Schedule
4. Summary of Update Needs
5. Approach to Public Engagement
6. Next Steps
7. Q&A

- **Packet materials**
 - PPP
 - Community Profile
 - GMA Checklist

Meeting Purpose



Share the process for updating the Mason County Comprehensive Plan



and

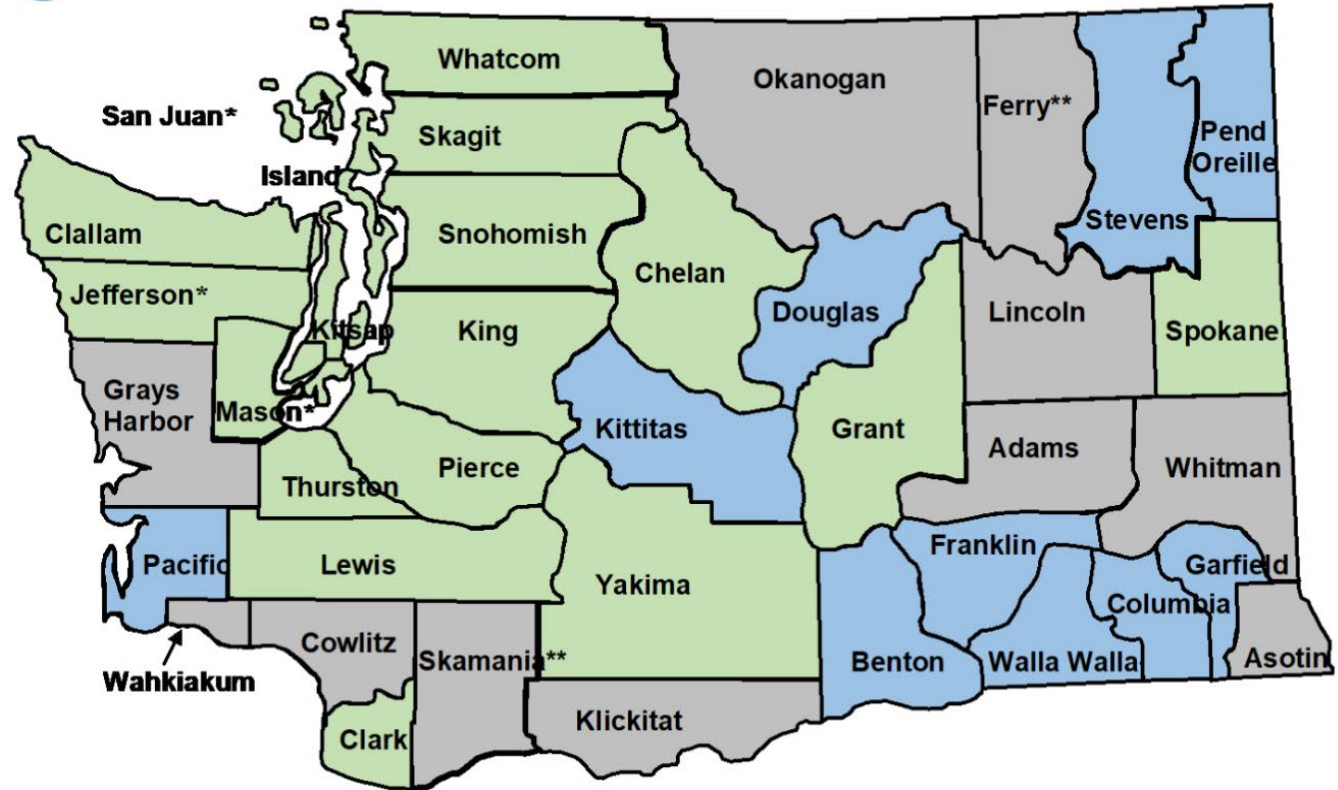


Collect input from the Planning Advisory Commission about how you envision the future of Mason County

Introduction to Comprehensive Planning



Who is required to have a Comprehensive Plan in Washington?



| | | |
|--|--------------------------------------|--|
| 18 Counties Required to Plan Fully | 10 Counties "Opted-In" To Plan Fully | 11 Counties Subject to Critical Areas and Natural Resource Lands Requirements Only |
| * Did not exercise ability to Opt-Out of full GMA Planning | | ** Exercised ability to Opt-Out of full GMA Planning |

Mason County Comp Plan Update - Purpose

What is a Comprehensive Plan?



Guides **decisions by elected** officials and government staff



Determines the **cities future vision and growth**

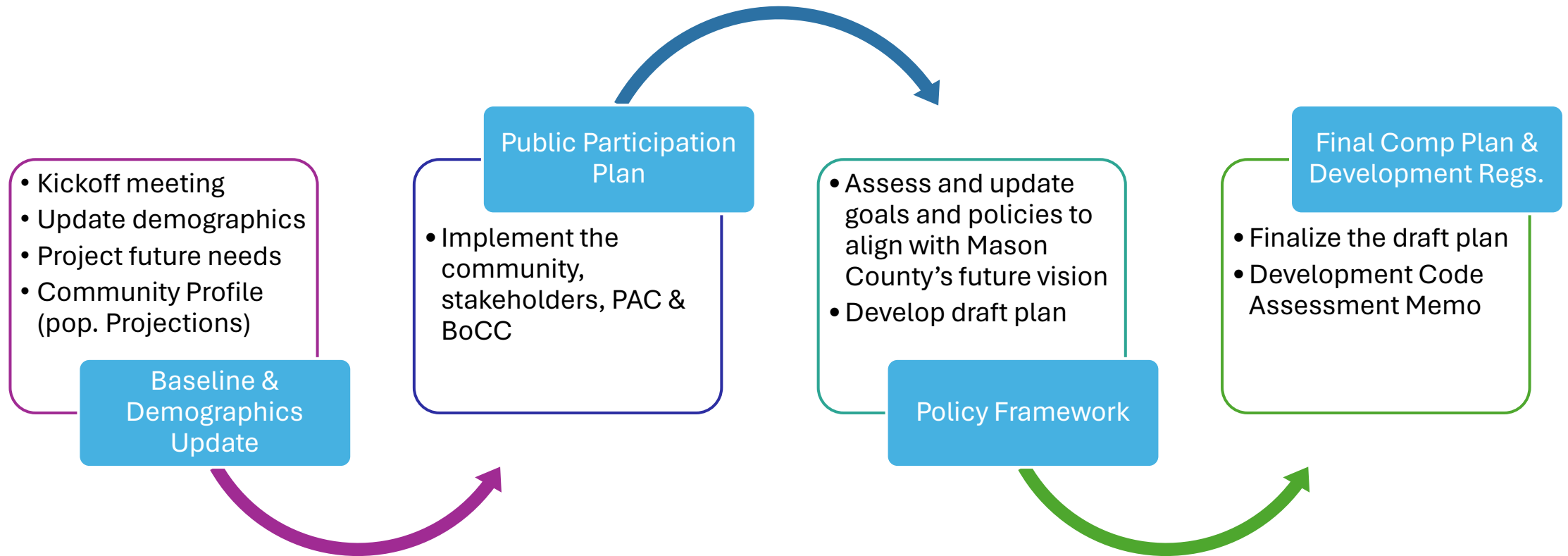


Establishes **goals, policies, and actions**

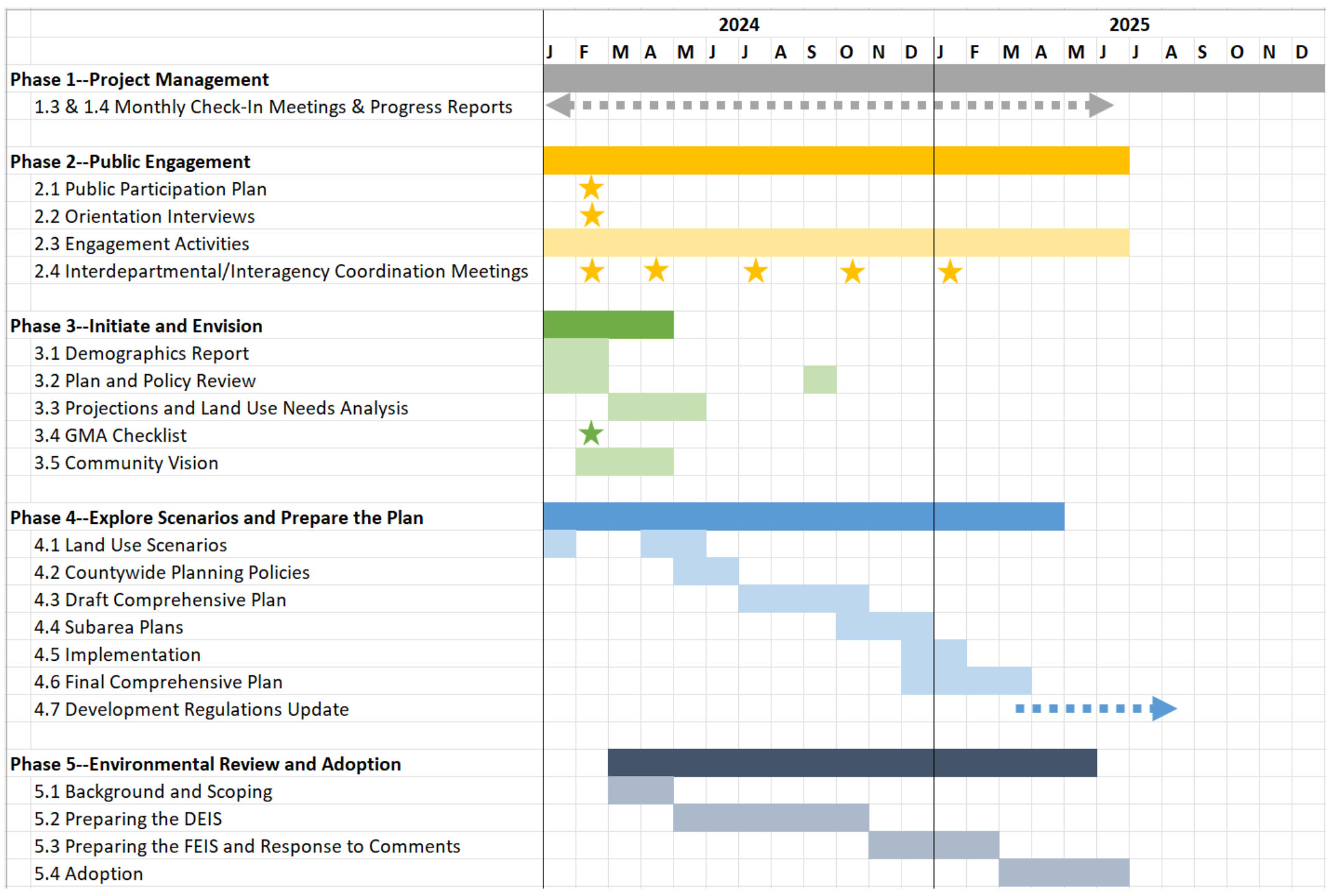
Why is Mason County updating it?

- Mason County last comprehensive plan was **updated in 2015**
- Mason County has been **growing and changing** – we don't expect this to slow down
- The updated comp plan will make the County **eligible for grants and programs**

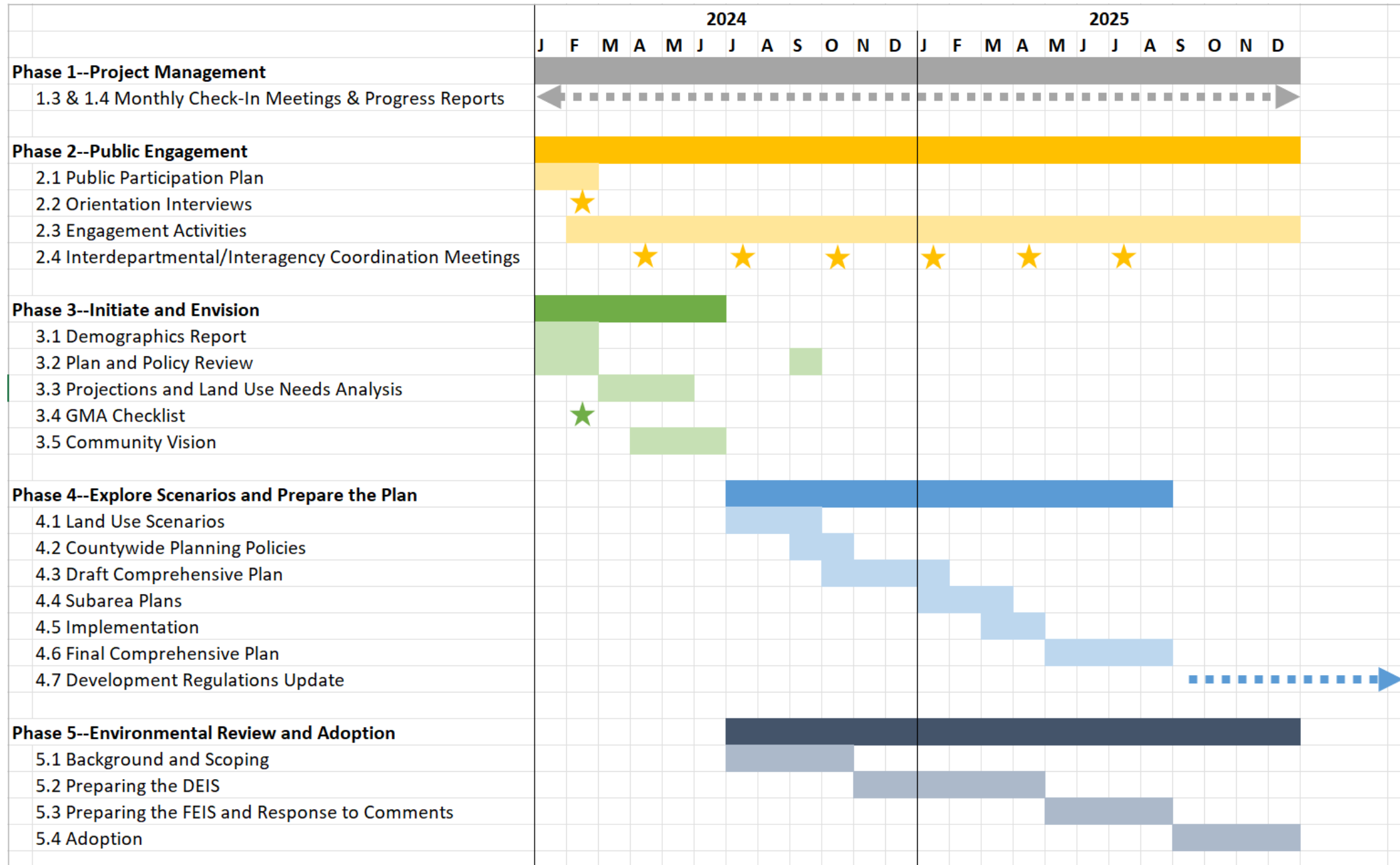
Update Process



Project Schedule



Project Schedule Extended





Summary of Update Needs

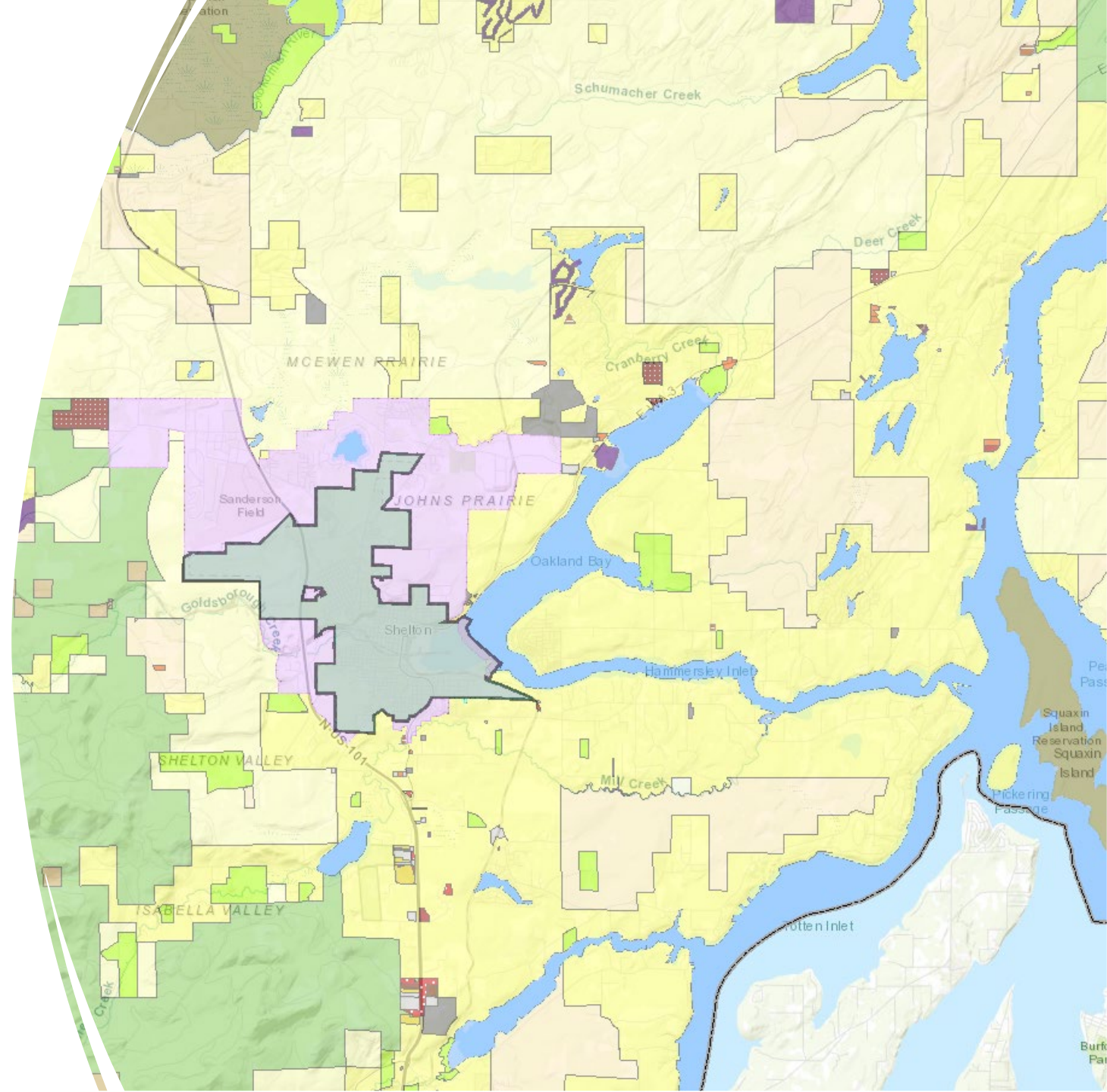
GMA Checklist Overview

Comprehensive Plan Elements

- Land Use
- Housing Element
- Capital Facilities
 - *Water, Sewer, and Stormwater Plans*
- Transportation Master Plan
- **Countywide Planning Policies (CWPP)**
- Rural Element
- Utilities Element
- Parks and Trails Plan
- Economic Development Element
- Health and Human Services
- Plan Implementation and Monitoring

Land Use Element

- Incorporate new growth allocations and potential changes to development patterns resulting from housing legislation.
- Include policies to site organic materials management facilities.





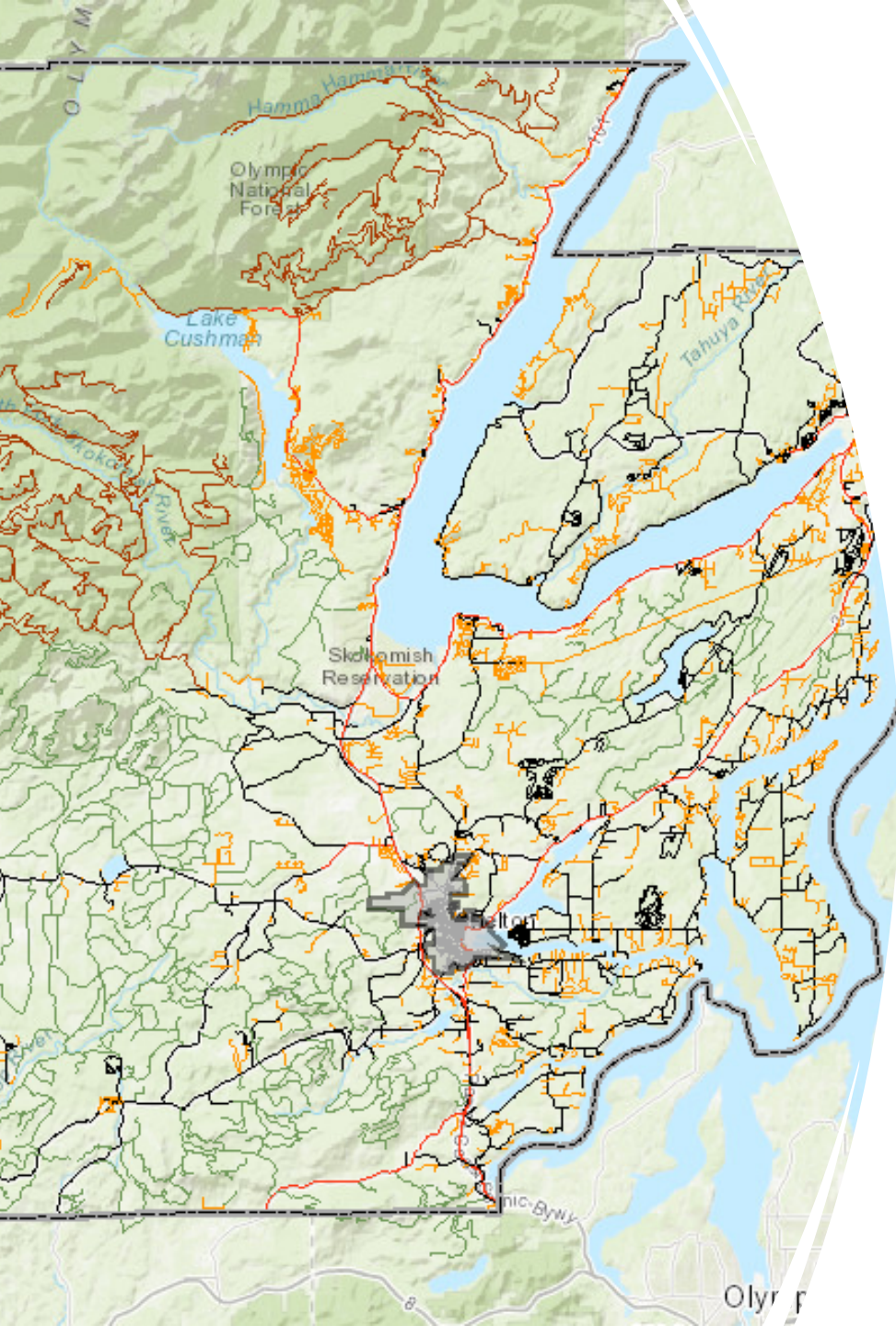
Housing Element

- Update the land capacity analysis to address land availability by income bands.
- Include policies addressing housing locations in relation to employment and the role of ADUs.
- Perform racially disparate impact and displacement risk analyses and adopt policies to address findings.




Capital Facilities Element

- Review and update to identify the transportation facilities, and public facilities and services needed to serve the UGA.
- Update CIP for 20- and 6-year planning horizons
- Reduce the cost of serving new development with public facilities.
- Clarify policies related to budget decision-making.



Transportation Element

- Update inventory of facilities and services to reflect changes since 2015.
- Review and update Level of Service (LOS) information, including nonmotorized LOS.
- Review and update the Transportation Improvement Plan (TIP).
- Update traffic forecast and system needs projection.
- Review and adopt policies related to transportation demand management strategies.



General Updates

- Clarify policies related to siting essential public facilities.
- Update the County-wide Planning Policies to fit the counties future vision and for GMA required updates
- Review and update parks and recreation facilities and amenities.

INTERACTIVE: Feedback on priorities




Do you have any feedback on the items we've shared?



What are the priorities for this update?



What gaps/Wishlist items do you want to address during the update?



Approach to Public Engagement

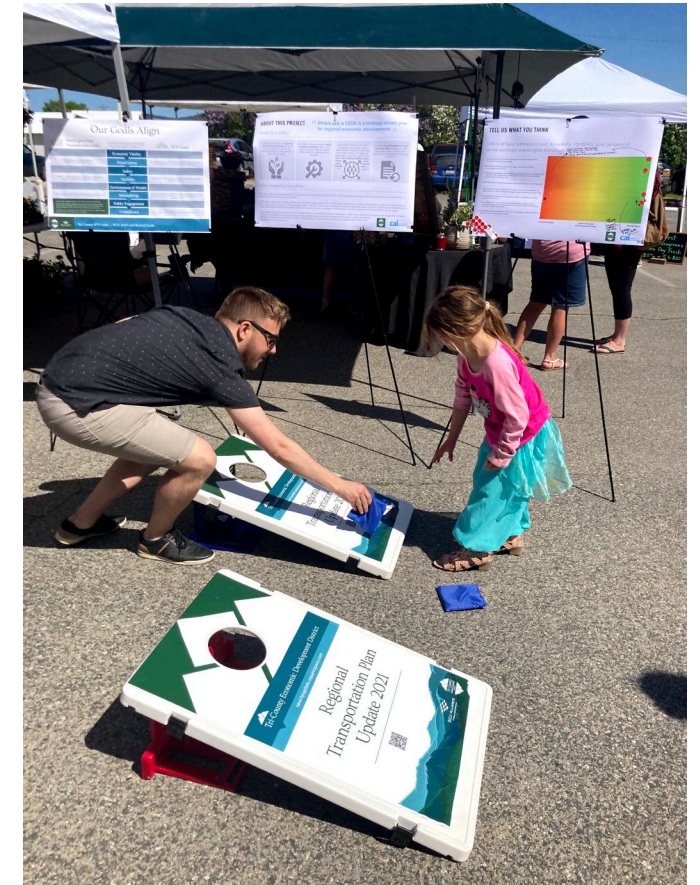


Public Engagement Plan



Our public engagement results will help create actionable strategies to meet the current and projected needs.... While having fun in the process!

- ▶ **Engage individual stakeholders**, and a culturally diverse public
- ▶ Evaluate **support for existing and proposed policies and action** recommendations
- ▶ **Spark ideas and generate innovative solutions** to help **improve the quality of living** in Mason County
- ▶ **Help the community feel heard and supported** by their local government





Engagement Activities

- ▶ **Project Website**
 - Project status and timeline
- ▶ **Social Media**
 - Broadcast public events and surveys
- ▶ **Orientation Interview**
 - Community representatives, collaborators
- ▶ **Questionnaire**
 - Design surveys
- ▶ **Public Workshop – Two Days**
 - Workshop 1 - Information meeting
 - Workshop 2 - Address policy changes and elements
- ▶ **Studio Series – Two Days**
 - Meetings and charettes
- ▶ **Roll-Out Open House**
 - Gather information from community

Mason County Planning Advisory Commission

- ▶ Essential to the process
- ▶ Present findings
- ▶ Confirm direction
- ▶ Adopt the final plan, Board of County Commissioners(BoCC)



INTERACTIVE: Feedback on Engagement

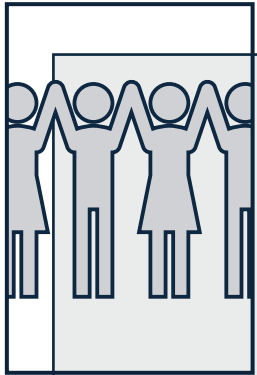


Do you have any feedback on the engagement activities?

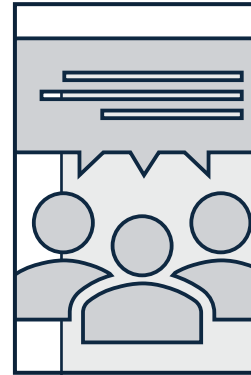


How do you want to be involved in the engagement activities?

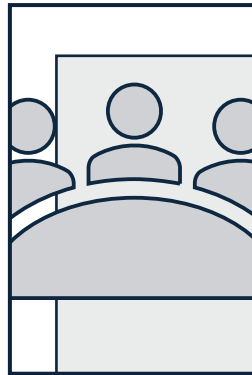
Next Steps




Baseline Assessment
& Demographics



Policy Framework



Implementation
Public Participation



Q&A

Cristina Haworth, AICP

Email - cristina.haworth@scjalliance.com

Phone – 360.352.1465 EXT 398

Alicia Ayars, AICP

Email - alicia.ayars@scjalliance.com

Phone - 509.990.7438

Thank you!



SCJ ALLIANCE
CONSULTING SERVICES