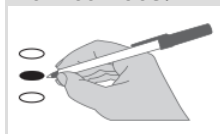


**Instructions**

**Start Voting Here**

**How to Vote:**

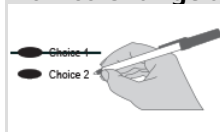


Using a dark pen, **completely** fill in the oval next to your choice.

Do not use a felt tip marker.

**Vote for one in each race.**

**How to Change a Vote:**



Draw a line through the entire incorrect choice.

You then have the option of selecting another choice.

**Overvote:**

Races or issues that have more target areas marked than are allowed are overvotes. No votes for that race or issue shall count.

**Mason County Auditor's Office  
Election Department - Vote Center**

411 N 5th St (Second Floor)  
Shelton, WA 98584

Phone: (360) 427 - 9670 Ext. 470

Fax: (360) 427 - 7768

Email: [elections@masoncountywa.gov](mailto:elections@masoncountywa.gov)

Web: [www.masoncountywaelections.gov](http://www.masoncountywaelections.gov)

**Vote Center Hours:**

Monday - Friday: 9:00 AM - 4:00 PM

Election Day: 9:00 AM - 8:00 PM

**Who donates to campaigns?**

View financial contributors for state and local candidates and measures:

**Public Disclosure Commission**

[www.pdc.wa.gov](http://www.pdc.wa.gov)

Toll free (877) 601-2828

**School District**

**Proposition 1**

**Hood Canal School District No. 404**

**Replacement of Expiring Levy for Educational Programs and Operations**

The Board of Directors of Hood Canal School District No. 404 adopted Resolution No. 02-2425, concerning a replacement levy supporting the education of Hood Canal students. This proposition would authorize the District to levy the following excess taxes, on all taxable property within the District, to replace an expiring levy and pay expenses of educational programs, activities and operations not funded by the State:

<u>Collection Year</u>	<u>Estimated Levy Rate/\$1,000</u>	<u>Assessed Value</u>	<u>Levy Amount</u>
2026	\$0.74		\$1,775,000
2027	\$0.73		\$1,825,000
2028	\$0.71		\$1,875,000
2029	\$0.71		\$1,925,000

all as provided in Resolution No. 02-2425.

**Should this proposition be approved?**

**Levy...Yes**

**Levy...No**

**Proposition 2**

**Hood Canal School District No. 404**

**Capital Levy for Safety, Critical Infrastructure and Technology Upgrades**

The Board of Directors of Hood Canal School District No. 404 adopted Resolution No. 03-2425, concerning a capital levy supporting critical infrastructure for Hood Canal students. This proposition would authorize the District to levy the following excess taxes, on all taxable property within the District, to support capital improvements not funded by the State (including upgraded preschool, arts, music, STEM, library and playground spaces; modern technology; safe transportation facilities):

<u>Collection Year</u>	<u>Estimated Levy Rate/\$1,000</u>	<u>Assessed Value</u>	<u>Levy Amount</u>
2026	\$1.15		\$2,824,933
2027	\$1.15		\$2,958,365
2028	\$1.15		\$3,098,467
2029	\$1.15		\$3,245,575
2030	\$1.15		\$3,400,039
2031	\$1.15		\$3,562,225

all as provided in Resolution No. 03-2425.

**Should this proposition be approved?**

**Levy...Yes**

**Levy...No**

**North Mason School District No. 403  
Renewal of Educational Programs and Operations Levy**

The Board of Directors of North Mason School District adopted Resolution No. 11-G-24 concerning a proposition for a renewal levy for education funding. This proposition authorizes the District to levy the following excess taxes to renew an expired levy, on all taxable property within the District, to maintain the District's educational programs and operations, which are not funded or fully funded by the State:

<u>Collection Years</u>	<u>Estimated Levy Rate/\$1,000</u>	<u>Assessed Value*</u>	<u>Levy Amount</u>
2026	\$1.32		\$5,577,446
2027	\$1.32		\$5,577,446
2028	\$1.32		\$5,577,446
2029	\$1.32		\$5,577,446

\*to be adjusted for changes in assessed value

**Should this proposition be approved?**

**Levy...Yes**

**Levy...No**