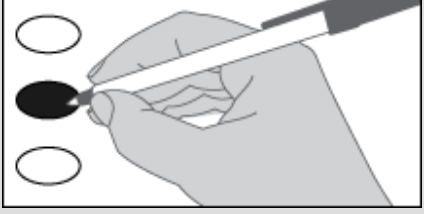


The Sample Ballot shows all contest in Mason County. **In the Primary, only the voters who reside in County Commissioner District 1 or 2 will receive a ballot with that contest.** In November, all eligible voters in Mason County will vote on both.

**Instructions**

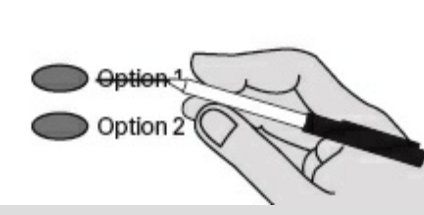
**How to vote**



Use a dark ink pen to completely fill in the oval to the left of your choice. **Do not use a felt tip marker.**

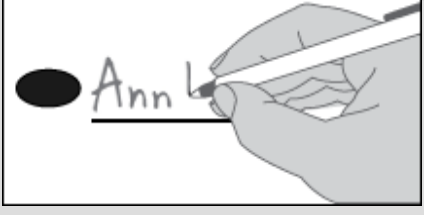
**Vote for one in each race.**  
 If you vote for more than one in a race or choose not to vote, no votes will be counted for that race.

**If you make a mistake**



Draw a line through the entire response or candidate's name. Then you may make another choice.

**Optional write-in**



To vote for a candidate not listed, fill in the oval to the left of the blank line and print the name of the candidate.

**Mason County Auditor's Office  
 Election Department - Vote Centers**  
 (360) 427-9670 ext. 470  
 elections@masoncountywa.gov  
 www.masoncountywaelections.gov

**Shelton Location:**  
 411 N 5th St - Second floor

**Monday - Friday** 9:00am - 4:00pm  
**Saturday, August 3** 9:00am - 1:00pm  
**Election Day** 9:00am - 8:00pm

**Belfair Location (Temporary):**  
 460 NE Old Belfair Hwy - Back of building

**August 1 - August 5** 9:00am - 4:00pm  
**Saturday, August 3** 9:00am - 1:00pm  
**Election Day** 9:00am - 8:00pm

**To update your address,  
 contact our office or online at  
 VoteWA.gov**

**Who donates to campaigns?**  
 View financial contributors for state and local candidates and measures:  
**Public Disclosure Commission**  
 www.pdc.wa.gov  
 1 (877) 601-2828

**Start Voting Here**

**Partisan Offices**

**READ: Each candidate for partisan office may state a political party that he or she prefers. A candidate's preference does not imply that the candidate is nominated or endorsed by the party, or that the party approves of or associates with that candidate.**

**Federal**

**United States  
 U.S. Senator**

- Mel Ram**  
(Prefers Republican Party)
- Dr Raul Garcia**  
(Prefers GOP Party)
- David Tilton**  
(Prefers Non-Partisan Party)
- Maria Cantwell**  
(Prefers Democratic Party)
- Chuck Jackson**  
(Prefers Independent Party)
- Isaac A Holyk**  
(Prefers Republican Party)
- Henry Clay Dennison**  
(Prefers Socialist Workers Party)
- Scott Nazarino**  
(Prefers Republican Party)
- Paul Lawrence Giesick**  
(Prefers Democratic Party)
- Thor Amundson**  
(Prefers Independent Party)
- Goodspaceguy**  
(Prefers Republican Party)
- 

**Congressional District 6  
 U.S. Representative**

- Emily Randall**  
(Prefers Democratic Party)
- Janis Clark**  
(Prefers Republican Party)
- Drew C MacEwen**  
(Prefers Republican Party)
- J. Graham Ralston**  
(Prefers Independent Party)
- Hilary Franz**  
(Prefers Democratic Party)
- 

**State**

**Governor**

- Jim Daniel**  
(Prefers Republican Party)
- Cassandra Magdalene Hanson**  
(Prefers Democratic Party)
- Jeff Curry**  
(Prefers Independent Party)
- Alex Tsimerman**  
(Prefers Standup-America Party)
- Mark Mullet**  
(Prefers Democratic Party)
- Martin Lee Wheeler**  
(Prefers Republican Party)
- Jennifer Hoover**  
(Prefers Republican Party)
- Andre Stackhouse**  
(Prefers Green Party)
- EL'ona Kearney**  
(Prefers Democratic Party)
- Ricky Anthony**  
(Prefers Democratic Party)
- Bob Ferguson**  
(Prefers Democratic Party)
- Chaytan Inman**  
(Prefers Democratic Party)
- Michael DePaula**  
(Prefers Libertarian Party)
- Dave Reichert**  
(Prefers Republican Party)
- Don L Rivers**  
(Prefers Democratic Party)
- Jim Clark**  
(States No Party Preference)
- Fred Grant**  
(Prefers Democratic Party)
- Leon A Lawson**  
(Prefers Trump Republican Party)
- Edward Cale IV**  
(Prefers Democratic Party)
- Frank Dare**  
(Prefers Independent Party)
- William Combs**  
(Prefers Independent Party)
- Alan Makayev**  
(Prefers Nonsense Busters Party)
- Brian Bogen**  
(Prefers Nonpartisan Party)
- A.L. Brown**  
(Prefers Republican Party)
- Brad Mjelde**  
(States No Party Preference)
- Bill Hirt**  
(Prefers Republican Party)
- Rosetta Marshall-Williams**  
(Prefers Independence Party)
- Semi Bird**  
(Prefers Republican Party)
- 

**Lt. Governor**

- Patrick "Pat" Harman**  
(Prefers Liberal Republican Party)
- David Griffin**  
(Prefers Democratic Party)
- Bob Hagglund**  
(Prefers Republican Party)
- Dan Matthews**  
(Prefers Republican Party)
- Denny Heck**  
(Prefers Democratic Party)
- 

**Secretary of State**

- Marquez Tiggs**  
(Prefers Democratic Party)
- Dale Whitaker**  
(Prefers Republican Party)
- Damon Townsend**  
(Prefers No Labels Party)
- Steve Hobbs**  
(Prefers Democratic Party)
- 

**State Treasurer**

- Mike Pellicciotti**  
(Prefers Democratic Party)
- Sharon Hanek**  
(Prefers Republican Party)
- 

**Continue voting next side**

**State**

**State Auditor**

**Matt Hawkins**  
(Prefers Republican Party)

**Pat (Patrice) McCarthy**  
(Prefers Democratic Party)

**Attorney General**

**Pete Serrano**  
(Prefers Republican Party)

**Nick Brown**  
(Prefers Democratic Party)

**Manka Dhingra**  
(Prefers Democratic Party)

**Commissioner of Public Lands**

**Allen Lebovitz**  
(Prefers Democratic Party)

**Jaime Herrera Beutler**  
(Prefers Republican Party)

**Dave Upthegrove**  
(Prefers Democratic Party)

**Sue Kuehl Pederson**  
(Prefers Republican Party)

**Patrick DePoe**  
(Prefers Democratic Party)

**Jeralee Anderson**  
(Prefers Democratic Party)

**Kevin Van De Wege**  
(Prefers Democratic Party)

**Nonpartisan Office**

**Superintendent of Public Instruction**

**Reid Saaris**

**Chris Reykdal**

**John Patterson Blair**

**David Olson**

**Partisan Offices**

**Insurance Commissioner**

**Patty Kuderer**  
(Prefers Democratic Party)

**Chris D. Chung**  
(Prefers Democratic Party)

**Jonathan Hendrix**  
(States No Party Preference)

**Bill Boyd**  
(Prefers Democratic Party)

**John Pestinger**  
(Prefers Democratic Party)

**Tim Verzal**  
(States No Party Preference)

**Phil Fortunato**  
(Prefers Republican Party)

**Justin Murta**  
(Prefers Republican Party)

**Legislative District 35  
State Representative Position 1**

**Dan Griffey**  
(Prefers Republican Party)

**Legislative District 35  
State Representative Position 2**

**Eric Onisko**  
(Prefers (GOP) Republican Party)

**Travis Couture**  
(Prefers Republican Party)

**James DeHart**  
(Prefers Democratic Party)

**County**

**Mason County Commissioner  
District 1**

**Ted Jackson**  
(Prefers Republican Party)

**William "Will" Harris**  
(Prefers Republican Party)

**Randy Neatherlin**  
(Prefers Independent Party)

**Mason County Commissioner  
District 2**

**Richard Beckman**  
(Prefers Republican Party)

**Tom Beben**  
(States No Party Preference)

**Pat Tarzwell**  
(Prefers Republican Party)

**Nonpartisan Office**

**Judicial**

**Supreme Court  
Justice Position 2**

**Todd A. Bloom**

**Sal Mungia**

**David R Shelvey**

**Dave Larson**

**Local**

**Fire Protection District No. 6  
Property Tax Levy for Fire  
Protection and Emergency  
Medical Services**

The Board of Mason County Fire Protection District No. 6 adopted Resolution No. 286, concerning a proposition to maintain and adequately fund District operations. This proposition authorizes the District to restore its regular property tax levy to \$1.50 per \$1,000.00 of assessed valuation to be levied in 2024 and authorizes annual adjustments by the greater of 1% or annual CPI-W for Seattle-Tacoma-Bellevue as reported in June of the levy year for each of the five succeeding years. The dollar amount of the levy in 2030 shall serve as the base for subsequent levy limitations as provided by Chapter 84.55 RCW.

**Should this proposition be approved?**

**Levy...Yes**

**Levy...No**

**North Mason Regional Fire Authority Property Tax Levy for Fire Protection and Emergency Medical Services**

The Board of North Mason Regional Fire Authority adopted Resolution No. 24-01, concerning a proposition to maintain and adequately fund District operations. This proposition authorizes North Mason Regional Fire Authority to restore its regular property tax levy to \$1.11 per \$1,000.00 of assessed value to be assessed in 2024 and collected in 2025. The funds will be used to maintain and improve fire protection and emergency medical services, replace apparatus and equipment, and provide for firefighter safety. The maximum allowable levy in 2024 shall serve as the base for subsequent levy limitations as provided by chapter 84.55 RCW.

**Should this proposition be approved?**

**Levy...Yes**

**Levy...No**

**Partisan Office**

**Precinct Committee Officer**

**For this office only:** In order to vote for precinct committee officer, a partisan office, you must affirm that you are a Democrat or a Republican and may vote only for one candidate from the party you select. Your vote for a candidate affirms your affiliation with the same party as the candidate. This preference is private and will not be matched to your name or shared.

**Precinct Committee Officer  
Republican Party  
Pickering Precinct - 113**

**Jeremy Morse**  
I affirm I am a Republican

**April Pruitt-Pooler**  
I affirm I am a Republican

**Precinct Committee Officer  
Republican Party  
Mason Lake Precinct - 116**

**Josh Morse**  
I affirm I am a Republican

**Wes Martin**  
I affirm I am a Republican

**Steve Van Denver**  
I affirm I am a Republican

**Precinct Committee Officer  
Republican Party  
N Allyn Precinct - 127**

**Chris Kay**  
I affirm I am a Republican

**Ted Jackson**  
I affirm I am a Republican

**Precinct Committee Officer  
Republican Party  
South Sand Hill Precinct - 131**

**Amy June Harding**  
I affirm I am a Republican

**Skye Oliver Kilbury**  
I affirm I am a Republican

**Precinct Committee Officer  
Republican Party  
Matlock Precinct - 232**

**Mike Brown**  
I affirm I am a Republican

**Melissa Upson**  
I affirm I am a Republican

**Precinct Committee Officer  
Republican Party  
Brockdale Precinct - 240**

**Pat Tarzwell**  
I affirm I am a Republican

**Richard Beckman**  
I affirm I am a Republican

**Vote Both Sides**

Sample Ballot  
Primary Election  
August 6, 2024  
Mason County, Washington

The Sample Ballot shows all contest in Mason County. **In the Primary, only the voters who reside in County Commissioner District 1 or 2 will receive a ballot with that contest.** In November, all eligible voters in Mason County will vote on both.

Sample Ballot

**Partisan Office**

**For this office only:** In order to vote for precinct committee officer, a partisan office, you must affirm that you are a Democrat or a Republican and may vote only for one candidate from the party you select. Your vote for a candidate affirms your affiliation with the same party as the candidate. This preference is private and will not be matched to your name or shared.

**Precinct Committee Officer  
Republican Party  
Olympic View Precinct - 301**

- Charles Flanagan**  
I affirm I am a Republican
- Eric Onisko**  
I affirm I am a Republican
- Ross Purgason**  
I affirm I am a Republican

**Precinct Committee Officer  
Republican Party  
Oakland Bay Precinct - 311**

- Bill Wells**  
I affirm I am a Republican
- Cynthia Radtke**  
I affirm I am a Republican

**Precinct Committee Officer  
Republican  
Lynch Creek Precinct - 341**

- Ted Trask**  
I affirm I am a Republican
- Robert MacEwen**  
I affirm I am a Republican

**Vote Early! Return Early!**  
Ensure your vote is counted.

**Thank you for returning your ballot  
no later than:  
Tuesday August 6, 2024.**

Sample

Continue voting next side



**Vote Both Sides**

Sample