

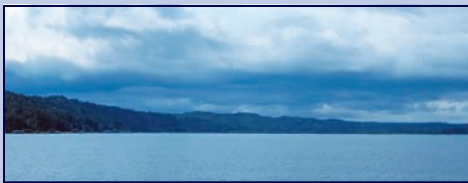


What Can I do to Protect and Restore Annas Bay?

- **Onsite Septic Systems.** Pump and inspect your septic system regularly. Make repairs ASAP (when needed).
- **Pet Waste.** Pick up pet waste, double bag it and dispose of in the trash. 
- **Garden Products.** Reduce nutrient inputs to surface and ground water by minimizing use of fertilizers, herbicides and pesticides. Follow directions carefully.
- **Yard Waste.** Reduce nutrients by not  throwing yard waste near or into streams, storm water drainages, or onto the shoreline.
- **Household Chemicals.** Find alternatives to cleaning products that reduce the amount of chemicals entering ground-water via septic or sewer systems. 
- **Hazardous & Drug Waste.** Dispose of unused pharmaceuticals in the trash or pharmacy. Take hazardous wastes to your nearest Mason County transfer station. 



SHOREBANK ENTERPRISE CASCADIA Let's change the world.®

Afraid septic repair costs will drain you?

The **ShoreBank Septic Loan** can be your solution to repairing or replacing the septic system you own on property in Mason, Jefferson or Kitsap counties. Our loan can meet your specific needs, regardless of income.

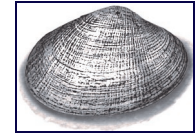
- 100% of your costs are covered, no hidden costs or out-of-pocket expense.
- Extremely low fixed interest rate, starting at 2% and determined by income.
- Choose any certified septic professional to do your work.

ShoreBank Enterprise Cascadia is a non-profit lender serving the needs of rural communities in Washington and Oregon. To learn more about the **ShoreBank Septic Loan** or to apply, visit www.sbseptic.com or our Shelton office at 221 W. Railroad Ave, Suite 12.



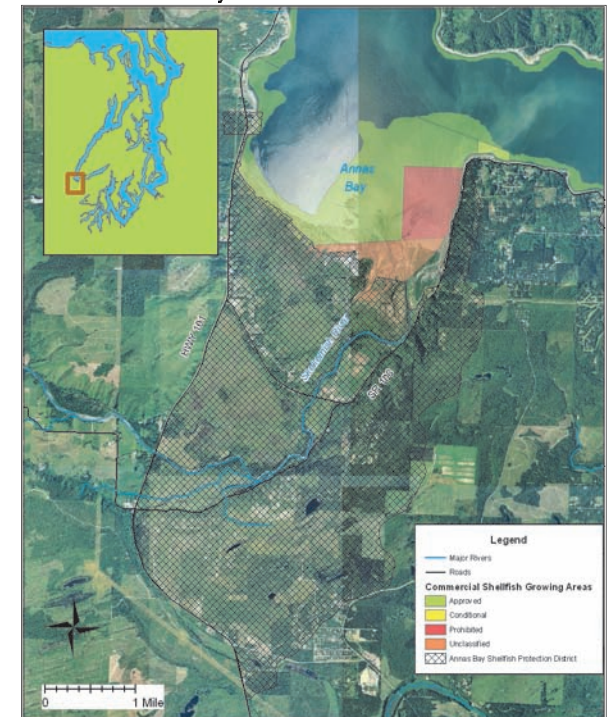
"I am deeply grateful and appreciate all your agency has done to help my daughters and me live in a safe home," Roxanne K. Bruner, Mason County homeowner and ShoreBank Septic Loan customer.

Contact ShoreBank Enterprise Cascadia at 360.426.2875, 360.642.4265 ext 152, or sbseptic@sbpac.com



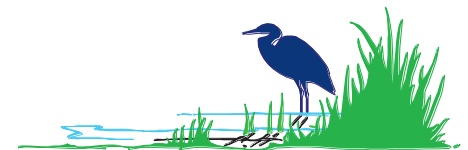
Annas Bay Shellfish Protection District Progress Report

Annas Bay Shellfish Protection District



Map Created by A. Georgeson on June 2, 2008

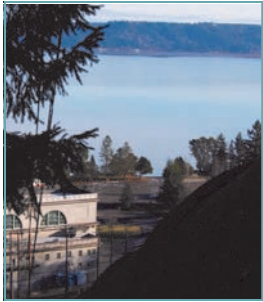
Mason County Public Health



www.co.mason.wa.us ✕ (360) 427-9670

Always working for a safer and healthier Mason County

Water Quality in Annas Bay Improves



What is the Issue?

In 2005, 300-acres on the eastern shore of Annas Bay were closed to commercial shellfish harvest due to high fecal coliform pollution in marine water samples.

What are the causes of fecal coliform pollution?

Fecal coliform bacteria are found in the untreated waste of warm-blooded animals, including humans, livestock and wildlife. Failing septic systems and pet waste can be major sources of fecal coliform pollution that can be corrected.

Why are we concerned with fecal coliform pollution?

When fecal coliform bacteria is present, harmful bacteria and viruses also found in feces may be present. Exposure to polluted water or eating shellfish that are grown in it can lead to health effects that range from earaches and rashes to more serious illnesses such as hepatitis and salmonella.



What has been done?

- A Shellfish Protection District (SPD) was formed in 2006 according to state law (RCW Ch. 90.72.045) to address the cause of pollution in the

shellfish growing area. The SPD includes 190 developed parcels of which 43 are on the eastern shoreline of Annas Bay (See Map). Grant-funded work in the area required no fees for residents.

- A committee of stakeholders was formed and a Shellfish Closure Response Strategy was drafted in response to the downgrade of commercial shellfish beds.
- The Skokomish Annas Bay Restoration Study was established to identify, investigate and monitor fecal contamination in waters flowing from adjacent shoreline and upland slope seeps on Annas Bay. Since 2005, Mason County Public Health (MCPH) has collected 728 fecal coliform samples from over 341 unique sites. Staff conducted 20 sanitary surveys of inhabited residences and 8 dye tests of septic systems. Currently 6 septic systems have been repaired and 6 septic systems have been replaced.
- MCPH staff worked to educate shoreline and upland property owners on related water quality issues and attended 6 public meetings to report on progress of the study.



- MCPH staff mentored students at ten youth education events attended by North Mason and Hood Canal Schools. Students were trained in water quality field procedures in the Lower Hood Canal area.

- MCPH staff observed no surface water runoff from the Webb Hill biosolids application site flowing to Annas Bay during the project period. See the WRIA 16-commissioned report for more information on groundwater and nutrients at:

http://www.ecy.wa.gov/apps/watersheds/planning/docs/webhill_biosolids.pdf

- Samples were collected to assess nutrient concentrations entering Annas Bay and Hood Canal. Analysis shows high soluble phosphate results in the mouth of the Skokomish River. This could be the result of natural processes or an indicator of gray-water discharge.



The Good News!

- Washington State Dept of Health (DOH) marine sample results in the Annas Bay growing area are showing decreasing fecal coliform levels and now meet the standards for approved harvest status. The shellfish beds will open as soon as sample results show sustained low fecal coliform levels.



MCPH Water Quality Staff

Mason County Public Health

PO Box 1666
Shelton, WA 98584

For more information or to have your septic system dye tested contact:
Seth Book
Environmental Health Specialist
Phone: 360-427-9670 x546
E-mail: sethb@co.mason.wa.us
www.co.mason.wa.us