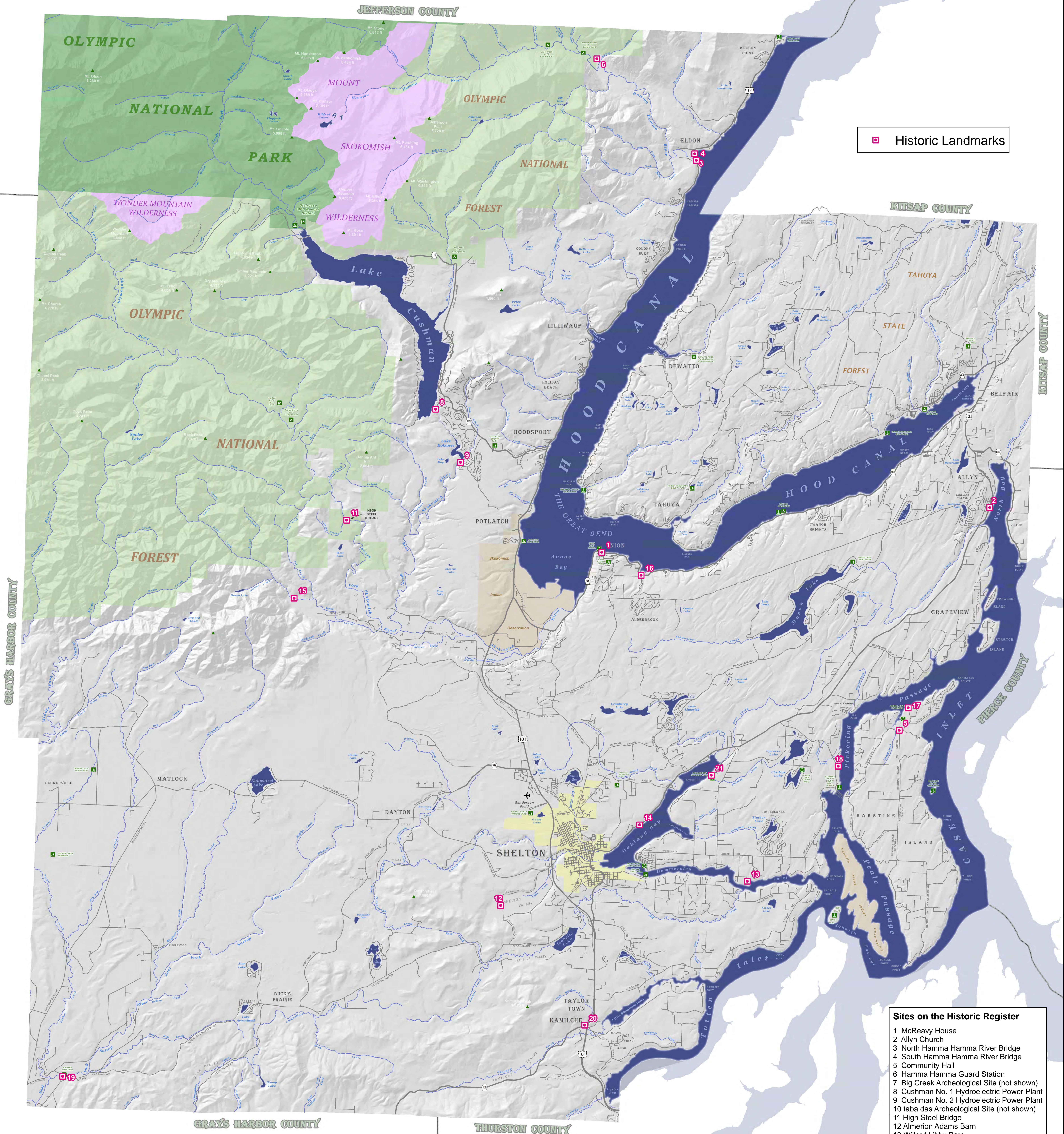


# Mason County Historic Preservation Historic Register Landmarks



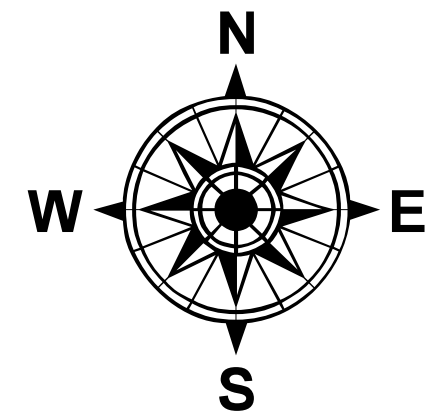
□ Historic Landmarks

### Sites on the Historic Register

- 1 McReavy House
  - 2 Allyn Church
  - 3 North Hamma Hamma River Bridge
  - 4 South Hamma Hamma River Bridge
  - 5 Community Hall
  - 6 Hamma Hamma Guard Station
  - 7 Big Creek Archeological Site (not shown)
  - 8 Cushman No. 1 Hydroelectric Power Plant
  - 9 Cushman No. 2 Hydroelectric Power Plant
  - 10 taba das Archeological Site (not shown)
  - 11 High Steel Bridge
  - 12 Almerion Adams Barn
  - 13 Willard Libby Barn
  - 14 Oakland Site
  - 15 Vance Creek Bridge
  - 16 Dalby Waterwheel
  - 17 Sunset Farm
  - 18 Grant School
  - 19 Schafer State Park
  - 20 Kamilche/Kennedy Cemetery
  - 21 Malaney O'Neil House
- Sites on the Historic Register as of August 2013



Mason County GIS Department  
Map produced with ArcGIS 10.1  
Map Information Date: 8/1/2013  
Map File: Historic\_Landmarks\_Map.mxd



#### ABOUT THIS MAP

Road, Highway, Mountain Summit, and Points of Interest information comes from the Mason County GIS Department and is current as of August 2008. Water Bodies, Rivers & Streams, National Park, National Forest, Wilderness Areas, State Forest and County boundaries information comes from the Washington State Department of Natural Resources. Tribal Reservation information comes from the Washington State Department of Transportation.