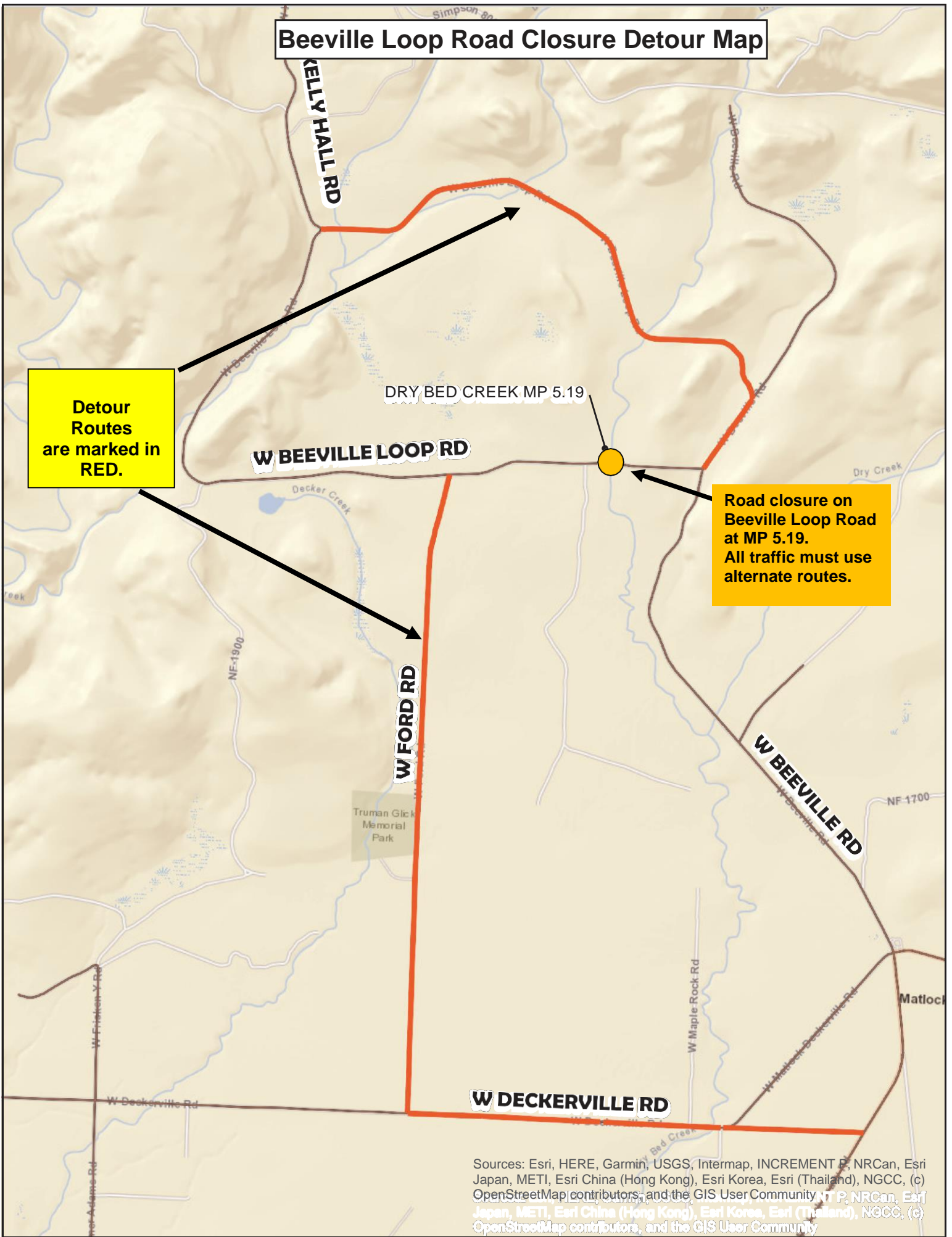


Beeville Loop Road Closure Detour Map

Detour Routes are marked in RED.

Road closure on Beeville Loop Road at MP 5.19. All traffic must use alternate routes.



Sources: Esri, HERE, Garmin, USGS, Intermap, INCREMENT P, NRCan, Esri Japan, METI, Esri China (Hong Kong), Esri Korea, Esri (Thailand), NGCC, (c) OpenStreetMap contributors, and the GIS User Community; Esri, HERE, Garmin, Japan, METI, Esri China (Hong Kong), Esri Korea, Esri (Thailand), NGCC, (c) OpenStreetMap contributors, and the GIS User Community